

EasyCAP001 Wireless Camera Receiver EasyCAP002 USB 2.0 DVR Quick Installation Guide

Installation Overview

- 1, EasyCAP001 Wireless Camera Receiver:
 - 1* EasyCAP001 Wireless Camera Receiver
 - 1* Power Adapter
 - 1* USB Cable
 - 1* Installations CD-ROM with:
 - . Driver for EasyCAP001 Wireless Camera Receiver
 - . Application

- 2, EasyCAP002 USB 2.0 DVR
 - 1* EasyCAP002 USB 2.0 DVR
 - 1* Installations CD-ROM with:
 - . Driver for EasyCAP002 USB 2.0 DVR
 - . Application



Connecting the EasyCAP001 Wireless Camera Receiver when you use it by TV, Monitor, or LCD Monitor:

You must connect the Power Adapter to Wireless Camera Receiver when you use it by TV, Monitor, or LCD Monitor. And you can use Remote Controller to set any function.

Driver-Installation

Note: "If you have any anti-virus software enabled, please disable it during the installation of the software."

N

When you first connect the EasyCAP001 Wireless Camera Receiver (or EasyCAP002 USB 2.0 DVR) to your computer a Hardware Assistant will appear, the "USB 2.0 Video Capture Controller" will be recognized.

Insert the "Installations CD-ROM" into your CD drive.
Select the option "Install Driver" and click "Next".

If prompted "Can Windows connect to Windows Update to search for software?" select "No, not this time" and select "Next". Select the option "Install the software automatically" and click "Next".

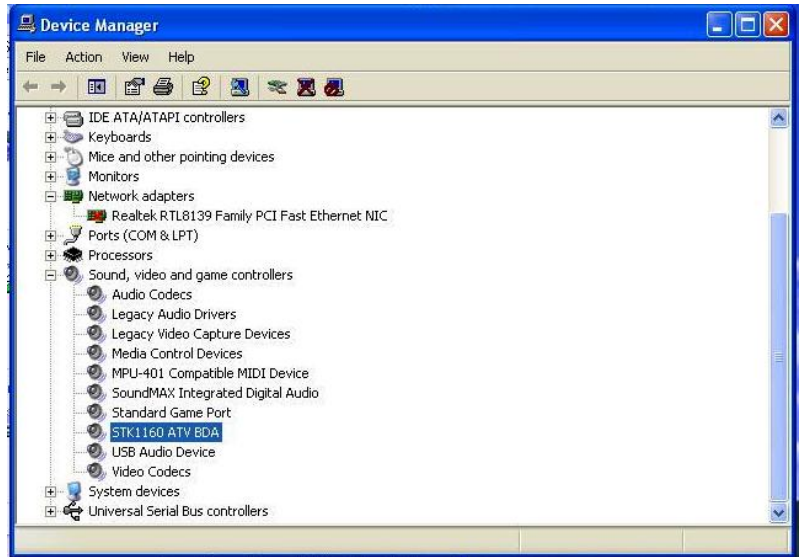
A window may appear about the "STK1160 ATV BDA" not passing the windows logo testing, select "Continue Anyway".
When "Completing the Found New Hardware wizard" window appears click the "Finish" button to complete the driver installation.



Note: "If any further components are found please repeat the above process until you receive the message "Found new hardware: Your hardware is installed and configured use"
N

You will now need to check that The drivers are installed correctly.
Right Click on My Computer and Left Click on Properties. Click on Hardware tab and then Device Manager.

In the “Device Manager”, click on the “+symbol” on the “Sound Video and Game controllers” section. If the driver is installed correctly you should see the “STK1160 ATV BDA”. If it has a Yellow mark next to it then this means that the driver is not installed correctly. You will need to remove the driver and disconnect the EasyCAP001 Wireless Camera Receiver (or EasyCAP002 USB 2.0 DVR) from the computer and re-connect is to install the driver again.



Software Installation

Software Installation for 1 channel input:

To start the Application Installation for 1channel, click Start / Run then type your CD-ROM and click “Install Wireless Camera Watcher for 1ch”. Select your language for the installation and Click “Next” or / and “Install”.



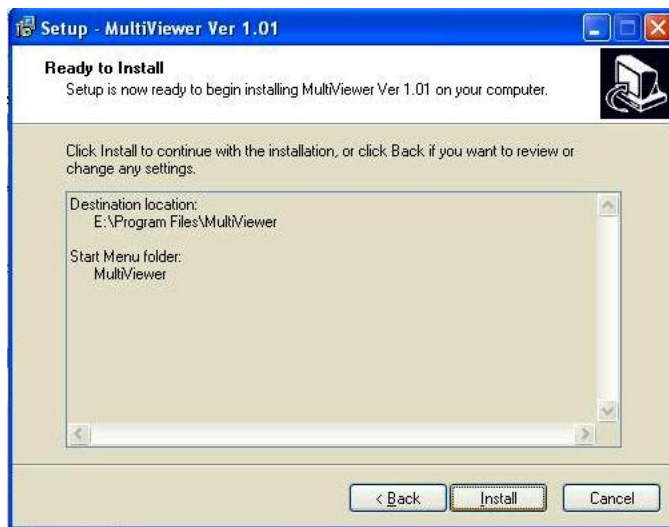
Click “finish” to complete setup, restart your computer if needed. Run Wireless Camera Watcher which you just installed.



Software Installation for 4 channels input:

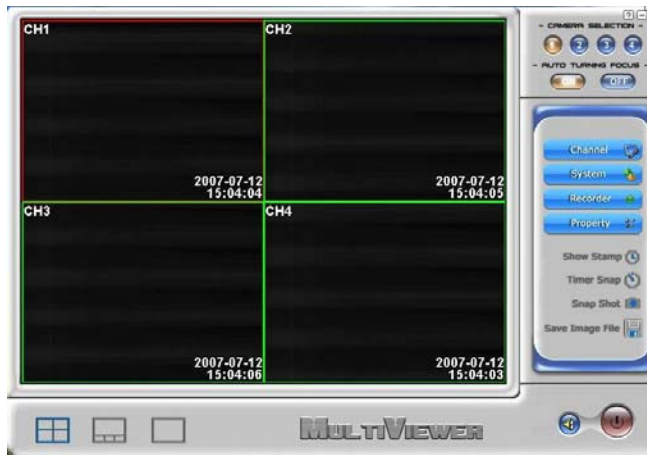
To start the Application Installation for 1channel, click Start / Run then type your CD-ROM and click "Install Multi Viewer for 4ch".

Select your language for the installation and Click "Next" or / and "Install".



Click "finish" to complete setup, restart your computer if needed.

Run Wireless Camera Watcher which you just installed.



Instruction of remote controller(EasyCAP001)

Note: The remote control only work for control the hardware device, not for the application of this device. Please do not use the channel auto-view function with both application and remote control at same time.

Key functions

Power on/off: only works for when using power adaptor.

CH1~CH4: to select the 1~4 channel on.

Auto: stop/start channel auto-view, automatically select CH1-CH2-CH3-CH4, then CH1...

The default speed is 1 time/second (you can also change the speed with using "CH1~CH4", for example: when you click "CH1" then click "Auto" the speed will be 1 time/second, CH2 for 2 time/second and so on...

Set: If you do not want to view any channel(s) of your camera, because some reason or you do not have 4 cameras, you can choose to skip the channel(s) when you using channel auto-view function. Use "SET" key and "CH1~CH4" keys you can set the LED light on and off for channel1~channel4 to make the relevant channel(s) be skipped. (light on means the channel working

light off means the channel is skipped)
